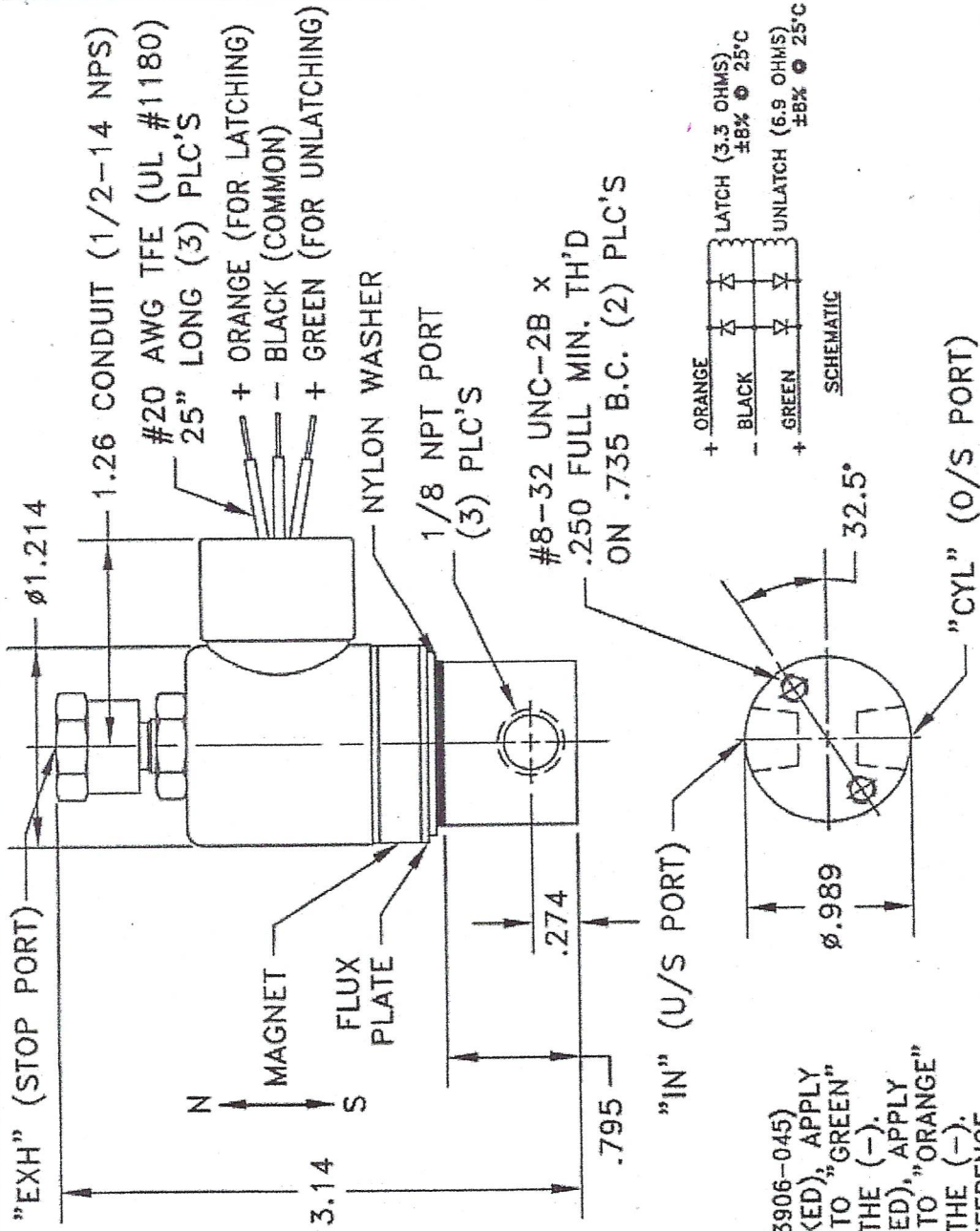


VALVE DATA

DESCRIPTION	SOLENOID VALVE, 3-WAY NORMALLY CLOSED, LATCHING
ORIFICE	1/16 x 1/16
VOLTAGE	6 VDC
WATTAGE	11 WATTS (LATCH) 6 WATTS (UNLATCH)
PRESSURE	45 PSI
SEALS, PLGR	HYDRIN
O-RING, BODY	NITRILE
PORTS	1/8-27 NPT
BODY MAT'L	303 S.S.
ADAPTER MAT'L	303 S.S.
COIL	CLASS-B (130°C) EPOXY ENCAPSULATED w/INTERNAL DIODES (P/N: 1N4006)
DUTY CYCLE	INTERMITTENT
LEAKAGE	BUBBLE-TIGHT
RECOMMENDED PULSE	1 SECOND LATCH & 1 SECOND UNLATCH
COIL INDUCTANCE NOM. @ 1 kHz	LATCH = 5.2 mH UNLATCH = 10.8 mH TOTAL = 32.2 mH

- REF: INNOVATIVE SOLAR INC. (P/N: 3906-045)
- TO UNLATCH ("IN" PORT BLOCKED), APPLY (+) VOLTAGE @ PULSE WIDTH TO "GREEN" LEAD WITH "BLACK" LEAD TO THE (-).
- TO LATCH ("EXH" PORT BLOCKED), APPLY (+) VOLTAGE @ PULSE WIDTH TO "ORANGE" LEAD WITH "BLACK" LEAD TO THE (-).
- NOTE: ALL DIMENSIONS ARE REFERENCE.



NOTICE - PROPRIETARY INFORMATION

THE DESIGN AND RELATED INFORMATION CONTAINED HEREIN IS THE SOLE PROPERTY OF GEMS SENSORS & CONTROLS. THE DISCLOSURE OF THIS INFORMATION DOES NOT CONSTITUTE THE RELEASE OF ANY PROPRIETARY RIGHTS THEREIN. PERMISSION TO REPRODUCE THIS INFORMATION OR PRODUCTS DISCLOSED HEREIN MUST BE OBTAINED IN WRITING FROM GEMS SENSORS & CONTROLS.

NAME	"BL" VALVE (OUTLINE & SPECS.)	
MAT'L	-	
FIN	-	
SCALE	FULL	CHK'D: SP 7/12/10
DRWN	REM 4/15/09	APP: NK 7/12/10
REVISED	CDN 10-0818	REN 7/12/10
	CDN 10-0391	REN 3/26/10
	CDN 10-0017	REN 1/6/10
	CDN 09-0851	REN 6/26/09
	CDN 09-0629	REN 5/12/09
	CDN 09-0521	REN 4/15/09
CHG LET.	REVISION	BY

SUPPLIER:
 DAVIS CONTROLS LTD.
 2200 BRISTOL CIRCLE
 OAKVILLE, ONTARIO, CANADA L6H 5R3
 TEL. 905.829.2000
 FAX. 905.829.2630
 CONTACT: DANA BIGNELL
 CELL: 519.242.3100
 e-mail: dbignell@sympatico.ca

INNOVATIVE SOLAR INC.